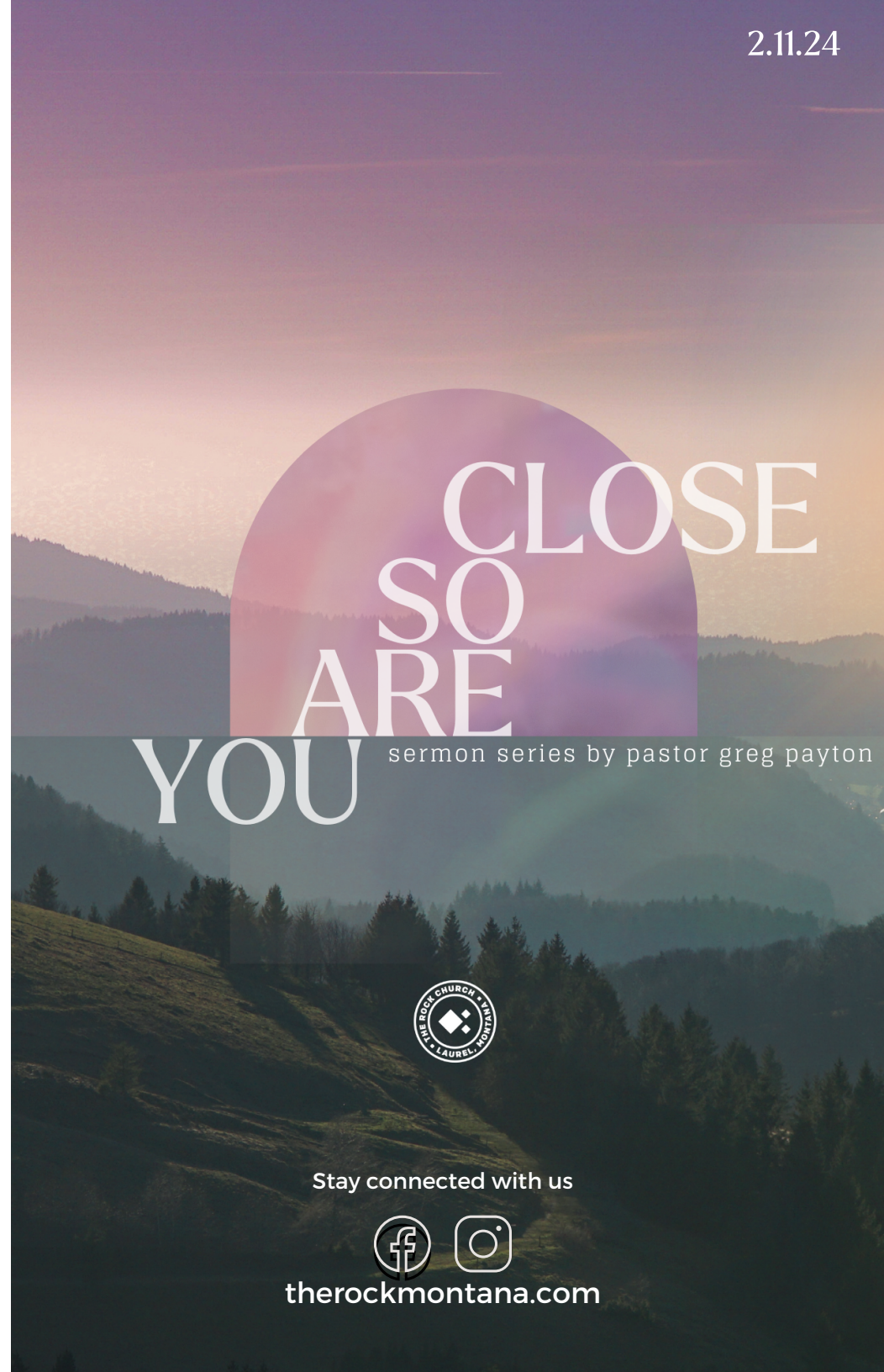




The Lord is my rock and my fortress and my deliverer,  
my God, my rock, in whom I take refuge, my shield,  
and the horn of my salvation, my stronghold.

Psalm 18:2

820 W. 9TH ST. | LAUREL, MT | 406.628.6200  
therockmontana.com



CLOSE  
SO  
ARE  
YOU

sermon series by pastor greg payton



Stay connected with us



therockmontana.com

# WELCOME

therockmontana.com

Sunday 2.11.24 | 10:30am



WORSHIP THROUGH MUSIC

WORSHIP THROUGH THE WORD


NEW SERIES BY PASTOR GREG PAYTON


WORSHIP THROUGH PRAYER

WORSHIP THROUGH GIVING

TRC  
GIVING

 Text TRC GIVING to 77977





 Give Online at:  
therockmontana.com/give

 Stop by one of the giving boxes

 Scan the image above with your phone camera



## STAY CONNECTED

-  **WOMEN'S BREAKFAST | 1ST SATURDAY OF EVERY MONTH**  
8:30AM @ TA TRUCK STOP
-  **MEN'S DINNER | 2ND TUESDAY EVERY MONTH**  
6:30PM @ LAUREL GOLF CLUB
-  **LIFEGROUPS | LAUNCHING IN FEBRUARY**
-  **COMMUNITY MEN'S LENTEN BREAKFAST | MARCH 20**  
6:30AM @ TRC

## YOU ARE SO CLOSE

### SO CLOSE TO GOOD FAITH

PART 2: Mark 1:39-2:14

Have you ever wondered why the term "faith" is often misused in church? There is a common confusion between faith and hope, discovering that perfect faith entails being confidently assured that Jesus can intervene while maintaining a hopeful expectation that he will. Jesus was very unconventional in his priorities, prioritizing meeting human needs over religious and political correctness. In the grand narrative, Jesus' mission was to usher in a transformative era. The message he preached was concise and direct. "The time has come, the kingdom of God is near," and you are so close!

### FIRST TIME ?

Thank you for joining us at TRC! We pray you've been encouraged during our time together. We would love to get to know you. Fill out your information on a blue welcome card and **get connected** with us.

### NEED PRAYER?

Text your prayer to **406-412-7140** or fill out a blue welcome card and leave in one of the giving boxes around the building.

### SERVE @TRC

If you are interested in getting more involved at TRC, let us know on a blue welcome card and place in the giving boxes around the building. There are many events to get involved with as well as **serving opportunities** on Sundays!

### SALVATION & BAPTISM

Right now, you can make a decision to follow Jesus. Find more details on the **Salvation** card in the seat back in front of you. If you have made this decision or have questions, please let us know on a blue welcome card.